

STANLEY®

Dura-Storm™ Impact Hurricane Series



- MIAMI-DADE COUNTY APPROVED
- NOW AVAILABLE IN FULL BREAKOUT
- SINGLE SLIDE OR BIPART
- 9/16" IMPACT GLASS
- WELDED PANEL CONSTRUCTION
- STEEL REINFORCEMENT TUBES
- FOAM BLOCK INSULATION
- WIND RESISTANT DAMPERS
- REINFORCED TOP/BOTTOM PIVOTS
- TOP/BOTTOM PANEL BALL DETENTS
- REDUCED AIR INFILTRATION
- REINFORCED SECURITY HOOKS
- LOCK/UNLOCK INDICATORS
- FLUSH BOLT SECURITY
- ARMORED STRIKE



Wind Resistant Damper



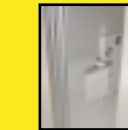
Foam Block
Insulation



Top/Bottom
Panel Ball
Detents



Reinforced Top/Bottom Pivots



Reinforced Security
Hooks



Lock/Unlock
Indicators



Flush Bolt
Security
& Armored
Strike

ENDURE HURRICANE FORCE WINDS WITH DURA-STORM™ DOORS.

The Dura-Storm Door Series meets the most stringent building design & code requirements.

Tested to meet Miami-Dade County Florida's code requirement for building structures withstanding hurricane forces.

Reduces air infiltration, endures high structural pressure and maximizes forced entry resistance.

Lower the cost of ownership by reducing the need for costly repairs caused from damaging winds.

Areas that experience high winds but lack a hurricane specific code, can benefit by improving building integrity.

Eliminates hurricane shutters per Florida code.

The Dura-Storm Impact Hurricane Series - the most rugged, solid, safe, and cost-effective doors on the market today.

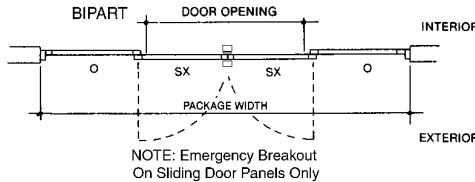
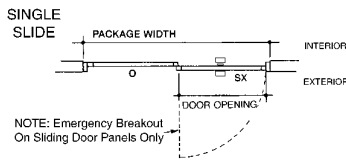
STANLEY®

MAKE SOMETHING GREAT™

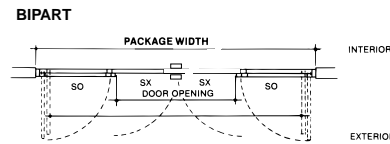
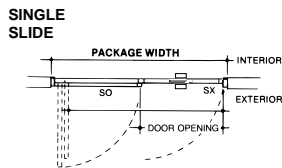
STANLEY®

Dura-Storm™ Impact Hurricane Series

2000 SERIES



3000 SERIES



DOOR PACKAGES ARE CUSTOM MANUFACTURED TO FIT YOUR JOB REQUIREMENTS

HEADER SIZE: 8" (203mm) high x 6" (152mm) deep

MAXIMUM SIZES: Single Slide— 9' (2.74m) wide x 8'8" (2.66m) high

Bipart— 16' (4.88m) wide x 8'8" (2.64m) high

Per Miami-Dade County NOA — Diamond Series: 15' 11.5" (4.86m) wide x 10'8" (3.25m) high

TYPICAL DOOR PANEL WEIGHT: up to 220 pounds each (100kg)

DRIVE SYSTEM: one 1/4 HP DC motor standard; option for two 1/4 HP DC motors on one continuous drive belt

CONTROLLER: microprocessor based, safety logic, watchdog LED

SENSORS: Two Stanley SU-100 motion sensors one Stanley Stan-Guard presence sensor and doorway holding beams.

BREAKOUT: SX and SO panels on the 3000, SX panels on the 2000

POWER REQUIRED: 120 VAC, 5 amps min.

CODE COMPLIANCE: ANSI A156.10, NFPA 101, UL, cUL, ICBO, BOCA, South Florida Building Code, Miami-Dade County Compliance, ASTM.

FEATURES / OPTIONS / PSF RATINGS

BREAKOUT

The Dura-Storm 3000 is available with emergency breakout on both the SX and the SO panels. Since both panels breakout, a larger opening is created for moving equipment or emergency egress.

ACTIVATION

Two SU-100 motion sensors, doorway holding beams and one StanGuard threshold sensor. Stan-Vision Video Sensor optional.

ADDITIONAL OPTIONS:

WIND RESISTANT DAMPER

Enhances wind resistance when the doors are not secured. Can minimize repair costs and risk of injury from uncontrolled opening of the door panel.

IMPACT GLASS

9/16" Impact glass is standard on impact models - scratch resistant polycarbonate laminate is centralized within glass lites eliminating surface scratching. 1/4" Tempered glass is standard on non-impact models. Custom tint colors optional.

HEAVY DUTY SERIES VERSION

Enhance durability even further by upgrading to the Dura-Guard™ Series version. Crash bars and kick plates improve durability, dual drive motors on one continuous drive belt & dual sensors enhance performance.

DOOR PACKAGE TYPE	MAX. DIMENSIONS H x W	PSF RATING
2000/3000 Dura-Storm Impact Series Medium Stiles Bipart Single Slide	7' 8" x 14' 0" 7' 8" x 8' 0"	±56 PSF
3000 Dura-Storm Impact Series Medium Stiles - Steel Reinforced Bipart Single Slide	8' 8" x 16' 0" 8' 8" x 9' 0"	±50 PSF
2000 Dura-Storm Impact Series Medium Stiles - Steel Reinforced, Impact Glass Bipart Single Side	8' 8" x 16' 0" 8' 8" x 9' 0"	±50 PSF
2000 Dura-Storm Impact Series Medium Stiles - Steel Reinforced, Impact Glass Bipart	10' 8" x 15' 11 1/2"	±43.3 PSF

REDUNDANT SAFETY OPTIONS

Safety system is enhanced with StanGuard active infrared threshold safety system, standard on every Stanley door, making Stanley doors the safest in the industry. Further safety and security can be enhanced with the addition of the Stanley state of the art Stan-Vision digital video motion sensor with CCTV uplink.

STEEL REINFORCED PANELS

Steel reinforcements prevent door panel deflection during high pressure loading and may be required based on door package size and/or building design.

Consult your Stanley authorized sales representative.

CUSTOMER CARE: 1-800-7-ACCESS (1-800-722-2377)

STANLEY®

MAKE SOMETHING GREAT™

The Stanley Works
Access Technologies Product Group
Customer Care: 1-800-7-ACCESS (1-800-722-2377)
<http://www.stanleyworks.com>